

## EC Revisits EPIC-Aadhaar Link Plan

### Background & Issue:

- The Election Commission (EC) is revisiting the earlier attempt (NERPAP in 2015) to **link voter IDs (EPIC) with Aadhaar**
- The initiative, halted after the Supreme Court's 2015 interim order limiting Aadhaar's mandatory use, is being reconsidered amid recent allegations of duplicate EPIC numbers and voter list manipulations.

### Recent Developments:

- Chief Election Commissioner Gyanesh Kumar has convened a meeting with top officials (Home Secretary, Legislative Secretary, and UIDAI CEO) to explore a renewed linking strategy.
- Opposition and ruling party complaints (e.g., Trinamool Congress flagging duplication in West Bengal) have intensified the debate.

A brief timeline of the efforts to link Aadhaar with voter ID



**FEB. 2015:** EC launches NERPAP to link Aadhaar with voter ID and eliminate duplicate entries. Over 300 million voters were linked within three months

**AUG. 2015:** Supreme Court issues an interim order restricting Aadhaar's mandatory use to welfare schemes and PAN linking

**MARCH 11, 2025:** Trinamool Congress delegation meets the Election Commission over allegations of duplicate EPIC numbers and cloned Aadhaar cards

### Implications:

- Electoral Integrity:** Addresses concerns over duplicate entries and voter verification errors.
- Technological and Process Dimensions:** Involves digital platforms (ERONET) and voluntary Aadhaar seeding as per updated guidelines under the Representation of the People Act, 1950.

## U.S. Travel Restrictions on 41 Nations

### Background & Issue:

- The U.S. administration is considering broad **travel restrictions** affecting citizens from 41 countries.

### Group Division:

- Group 1: Red** — E.g., Afghanistan, Iran, Syria, Cuba, North Korea — face full visa suspensions.
- Group 2: Orange** — E.g., Eritrea, Haiti, Laos, Myanmar, South Sudan — see partial suspensions affecting tourist, student, and some immigrant visas.
- Group 3: Yellow** — Including Belarus, Pakistan, Turkmenistan — face conditional partial suspensions based on their governments' remedial efforts within 60 days.

### PROPOSED TRAVEL BAN LIST

**RED**

All travel banned

- Afghanistan
- Bhutan
- Cuba
- Iran
- Libya
- North Korea
- Somalia
- Sudan
- Syria
- Venezuela
- Yemen

**ORANGE**

Visa sharply restricted

- Belarus
- Eritrea
- Haiti
- Laos
- Myanmar
- Sierra Leone
- South Sudan
- Turkmenistan

**YELLOW** 60 DAYS TO ADDRESS CONCERNS

- Angola
- Armenia
- Belarus
- Benin
- Burkina Faso
- Cambodia
- Cape Verde
- Chad
- Republic of Congo
- Dem. Republic of Congo
- Dominica
- Equatorial Guinea
- Gambia
- Zimbabwe
- Madawi
- Mali
- Mauritania
- St. Kitts and Nevis
- St. Lucia
- St. Vincent and the Grenadines
- Vanuatu
- Zimbabwe

**No entry**

- Citizens of 10 countries, including Afghanistan, Iran, Syria, Cuba and North Korea, will be totally barred from entering U.S.
- Five countries, including Eritrea, Laos and Myanmar, will face partial visa suspension
- Twenty-six nations, including Pakistan, whose citizens will have 60 days to address U.S. concerns

### Implications:

- National Security:** Reflects ongoing concerns over deficiencies in national security risks.
- Foreign Policy Continuity:** Echoes elements of the earlier Trump-era travel bans with potential adjustments by the current administration.
- Diplomatic & Economic Impact:** May influence bilateral ties and affect sectors such as tourism and education.

## Overhaul in ST Identification Criteria

### Background & Issue:

- Top anthropologists and experts are calling for a **revision of the criteria used to classify communities as Scheduled Tribes (STs) in India**.

### Debate & Discussion:

- Current criteria, established by the **Lokur Committee in 1965**, focus on traits like "primitive characteristics" and "geographical isolation" but are increasingly seen as outdated.
- Proposals suggest developing a "spectrum of tribalness" with multiple indicators (potentially up to 150) to more accurately capture the socio-cultural and historical nuances of communities.



Hundreds of communities, including the Meiteis, across the country are currently demanding inclusion in the list of Scheduled Tribes. RITU RAJ KONWAR

### Implications:

- Policy Reform:** A shift towards a more dynamic and inclusive classification system could address inter-community conflicts and claims for ST status.
- Social Justice:** May impact reservation benefits and government aid, influencing the socio-economic landscape.
- Anthropological Perspective:** Encourages a move from a binary classification to a more nuanced, multidimensional assessment of tribal identity.

## City of a Goddess: Attukal Pongala Ritual

### Background & Cultural Significance:

- The annual **Pongala ritual at the Attukal Bhagavathy temple in Thiruvananthapuram** is one of the largest religious gatherings of women globally.

### Key Ritual Elements:

- Practice:** Women prepare and cook offerings (a mix of rice, jaggery, ghee, and coconut) as an act of devotion to the goddess.
- Scale & Recognition:** Guinness World Records acknowledged it in 2009 for its massive participation (over 25 lakh women).
- Logistics & Management:** Extensive measures by Kerala Police and Fire services, including deployment of 3,815 police personnel and 847 cameras, ensure crowd control and safety.



### Implications & Dimensions:

- Cultural Identity:** Reflects the empowerment of women and the importance of local traditions in cultural preservation.
- Urban Management:** Demonstrates effective coordination between municipal authorities and emergency services during large-scale events.
- Tourism & Global Appeal:** Enhances Kerala's reputation as a vibrant center of cultural tourism.

## India's New Tiger Reserve – Madhav National Park

### Designation & Rationale:

- Madhav National Park in Madhya Pradesh has been declared the **country's 58th tiger reserve**.
- Tiger reserves were originally established to counter a drastic decline in tiger numbers due to hunting, poaching, and habitat loss.

### Key Features & Conservation Process:

- Location & Size:** Located in Madhya Pradesh with a **core area of 355 sq km and an adjoining buffer zone**.
- Tiger Population:** Initially lacking tigers, it now hosts a small but growing population (seven tigers reported recently) and **serves as a corridor linking to Ranthambore and Kuno National Park**.
- Management:** Follows NTCA guidelines that mandate **site-specific management plans, a core-buffer zone model, and integrated conservation interventions**.

### Homes for the big cat



### Broader Context:

- India's 2023 tiger census estimates about 3,682 tigers, with roughly 30% living outside designated reserves.
- The move reflects continued efforts to enhance connectivity between tiger habitats and to manage human-wildlife conflict, with implications for regional biodiversity and tourism.

## Environmental Mapping & Melioidosis in Odisha

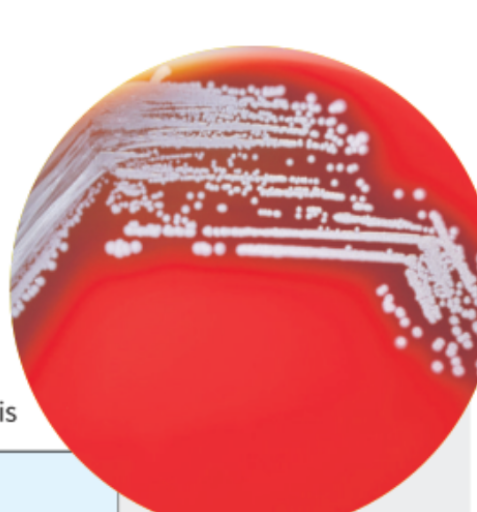
### Disease Overview:

- Melioidosis**, caused by the bacterium *Burkholderia pseudomallei*, presents with varied clinical manifestations and high fatality in severe cases.

### Survival of melioidosis-causing bacteria

Environmental conditions are primarily responsible for the survival of the bacteria

- As per a 2016 study, 1,65,000 people contract melioidosis annually worldwide; South Asian countries contribute 44% of the global burden
- The bacteria can cause a range of clinical manifestations — trivial skin infection to unresolved pneumonia and fulminant sepsis



- The bacteria that causes melioidosis requires prolonged incubation conditions, and hence may escape detection
- The study focused on 144 disease cases over a nine-year period from 2015 to 2023
- The disease peaked during and after the monsoon season
- Environmental mapping indicated that Cuttack, Balasore, Khordha, and Jaipur districts have a high potential for disease occurrence
- As climate change alters rainfall patterns, the diseases can become more widespread and/or shift to new regions

### Study Insights & Findings:

- Research in Odisha (covering 2015–2023) correlates melioidosis outbreaks with monsoon season—cases peak during and after heavy rainfall.
- Key meteorological parameters such as **rainfall, temperature, cloud cover, and solar radiation significantly influence bacterial survival and transmission**.

### Implications for Public Health:

- Mapping identifies high-risk districts (e.g., Cuttack, Balasore, Khordha, Jaipur) in densely populated areas.
- Highlights the importance of integrating climate analytics into disease surveillance and preparedness plans amid rapid urbanisation and climate change.

## Free Trade Agreements (FTAs) – Govt Initiatives

### Negotiation Progress:

- The Indian government is in the final stages of negotiating FTAs with key economies—the **U.S., U.K., and EU**—with expectations of announcements soon.

### Objectives & Benefits:

- Aim** to boost export opportunities, attract higher investments, and provide a more level playing field for Indian exporters.
- Efforts include a **shift away from protectionist mindsets** and promoting negotiations from a stance of strength and self-confidence.

### Strategic Importance:

- Successful FTAs would enhance India's global trade competitiveness and could offset challenges posed by potential reciprocal tariffs from trading partners.

## Ukraine Security Guarantees & Zelenskyy's Appeal

### Security Demands:

- Ukrainian President Zelenskyy has urged Western allies for clear security guarantees**, including the potential deployment of foreign ground contingents on Ukrainian soil backed by U.S. support.

### Diplomatic Dynamics:

- Discussions at international fora (including the **Raisina Dialogue** and virtual summits) highlight divergent views among European leaders and U.S. strategists regarding the scope and nature of security assistance.
- The call is aimed at ensuring a more reliable and robust peace arrangement, countering Russian efforts to stall ceasefire negotiations.

### Implications for Regional Security:

- The appeal underscores the importance of cohesive Western support for Ukraine amid the evolving dynamics of the Russia-Ukraine conflict and reflects broader shifts in transatlantic security cooperation.

## Fencing of the India-Myanmar Border

### Background & Issue:

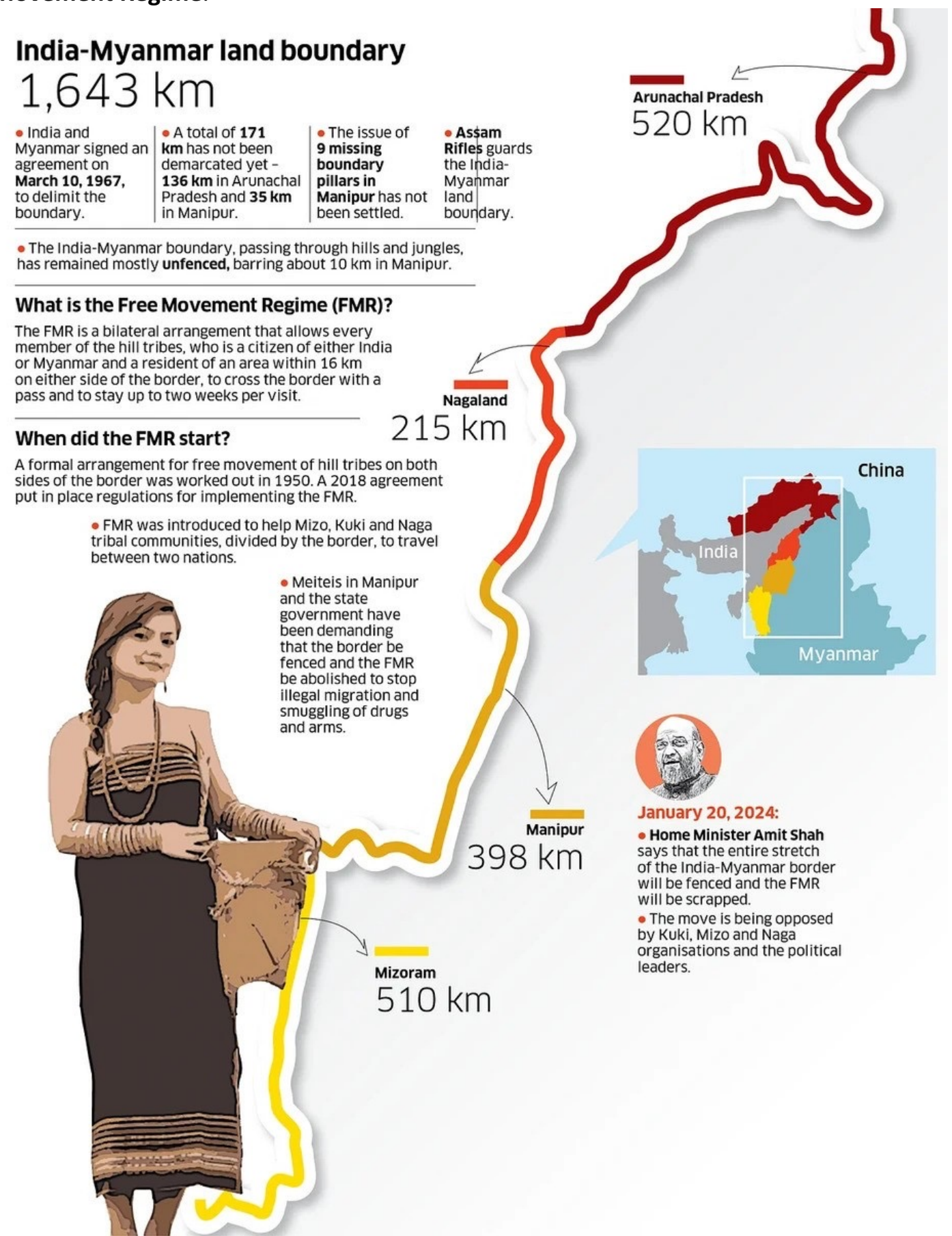
- India plans to construct an **"anti-cut, anti-climb" fence along its entire 1,643-km border with Myanmar** within the next 10 years.

### Recent Developments:

- The project, initiated by Union Home Minister Amit Shah, has already seen significant expenditure (₹114.09 crore from April–December 2024).
- A parliamentary panel report outlines a total project cost of around ₹31,000 crore, which includes road connectivity to the Assam Rifles' bases.

### Implications:

- Security & Infiltration:** Aims to **deter illegal border crossings** and **enhance surveillance** (installation of cameras and border gates).
- Regional Dynamics:** Potential model for similar projects along other international borders (with Pakistan and Bangladesh).
- Socio-Cultural Impact:** Faces opposition from local ethnic groups (e.g., Naga and Kuki-Zo bodies) due to possible disruption of traditional cross-border ties and the **Free Movement Regime**.



## Beed Police Drop Surnames on Name Plates

### Background & Issue:

- In a bid to **reduce caste-based biases and social tension**, the **Beed police have removed surnames from their name plates** and now refer to each other only by their first names.

### Context & Developments:

- The decision follows heightened communal tensions in Beed after the murder of a local sarpanch, which triggered community-based disputes.
- The new **measure aims to project neutrality and enhance public trust in the police force**.

### Implications:

- Social Harmony:** Seeks to mitigate caste-based prejudices and reduce potential biases during law enforcement.
- Institutional Image:** Represents a progressive move towards depoliticising police identity and fostering an inclusive public service image.
- Community Relations:** Expected to build confidence among diverse communities by promoting an unbiased approach.



First step: The new name plates given to the police personnel at the Beed SP office carry only their first name. EMMANUEL YOGINI

## Billion-Dollar Fund for the Creators' Economy

### Background & Issue:

- The Indian government has announced a **\$1 billion investment to boost the "creators' economy"**

### Key Elements:

- Objective:** To help content creators upgrade skills, production quality, and global market outreach.
- Event Context:** Announcement was part of a high-level session ahead of the **World Audio Visual and Entertainment Summit (WAVES) 2025** in Mumbai.
- Collaborative Effort:** Involves partnerships with state governments (e.g., Maharashtra) and participation of key ministers (I&B Minister Ashwini Vaishnaw, External Affairs Minister S. Jaishankar).

## ICC Warrant & Duterte's Arrest

### ICC Reach & Enforcement:

- The ICC issues arrest warrants under the **Rome Statute**, but it depends on national governments for execution.
- Arrest mandates apply to all 125 signatories, yet compliance is inconsistent.** Non-cooperation can be escalated via the Assembly of States Parties or UNSC intervention.

### Duterte's Case & Investigation:

- Former Philippine President Duterte** faces charges for crimes against humanity linked to his "war on drugs" (2011–2019).
- Despite the Philippines' withdrawal from the ICC in 2019, the court claims jurisdiction over crimes committed before that exit.
- His case represents a rare instance where the ICC's warrant is being actively pursued, unlike symbolic warrants against leaders in other countries.



### Implications & Domestic Politics:

- Highlights the court's vulnerability to domestic political pressures, as national governments decide on enforcement.
- Could set a precedent for future accountability cases amid debates over national sovereignty versus international justice.

## Raisina Dialogue Agenda



### Overview & Themes:

- The annual Raisina Dialogue (10th edition) is set to discuss major global strategic issues, including U.S. foreign policy shifts, Ukraine, tariffs, and Indo-Pacific security.

### Key Issues & Participants:

- U.S. Policy & Global Alliances:** Debates over the implications of policies under President Trump, discussions on tariffs affecting global trade, and the U.S. Indo-Pacific strategy.
- Ukraine Conflict:** Expect discussions on peace prospects, security guarantees, and proposals for European contingents with a U.S. backdrop.
- Multilateral Engagement:** Notable participation from European, North American, and select Global South leaders; absence of traditional speakers (e.g., Russia's Lavrov) signals evolving geopolitical alignments.

### Regional Representation:

- The dialogue reflects India's diplomatic balancing act—strong representation from Europe and the U.S., while West and South East Asia maintain a muted presence, underlining regional diplomatic nuances.

## The Rebels Who Shook Pakistan – BLA Overview

### Historical Context & Evolution:

- Originating from the Baloch nationalist movement, the **Baloch Liberation Army (BLA)** has evolved away from traditional clan-based leadership toward a younger, more urban, social media-savvy cadre.

### Recent Operations & Impact:

- The BLA has staged high-profile attacks (e.g., on the **Quetta-Peshawar Jaffar Express** and Karachi airport road), signaling a resurgence despite setbacks (loss of key commanders, U.S. terrorist designation).
- Their operations highlight growing logistical capability and a shift in regional security dynamics, especially amid tensions between Pakistan and the Taliban.

### Broader Implications:

- Reflects deeper issues of **federal exploitation, resource control, and unresolved ethnic grievances in Balochistan**.
- Also plays into regional geopolitics, with Pakistan pointing fingers at external influences while emphasizing internal security challenges.



## Greenhouse Gas Emissions & Satellite Capacity

### Key Findings from Modelling:

- Increased human-induced greenhouse gas emissions are projected to cool and contract Earth's upper atmosphere (mesosphere and thermosphere).**
- This contraction could reduce atmospheric drag, thereby lengthening the orbital life of space debris.**

### Impact on Satellite Operations:

- Under **high-emission scenarios (SSP5-8.5)**, the sustainable carrying capacity of low Earth orbit could decline by 50–66% by 2100, affecting millions of satellites.
- Reduced deorbiting rates increase collision risks, complicating satellite management and long-term space sustainability.

### Broader Implications:

- The study underscores that climate mitigation is crucial not only for Earth's environment but also for preserving safe and sustainable access to outer space.

## SpaceX Crew Launch to Replace Stranded NASA Astronauts

### Mission Background:

- A replacement crew has been launched by SpaceX to the **International Space Station (ISS)** to facilitate the return of two stranded NASA astronauts after delays in the Starliner program.

### Operational Details:

- The new crew comprises NASA military pilots and international astronauts (from Japan and Russia) and will overlap with the current crew to ensure a smooth handover.
- The mission underscores challenges in human spaceflight, including technical glitches (e.g., helium leaks, thruster failures) and the need for backup systems.

### Implications & Broader Context:

- Highlights the operational resilience and adaptability of NASA and commercial partners in managing critical crew rotations.
- The episode also carries political overtones, with public and administrative pressures to accelerate safe returns, illustrating the high stakes of modern space exploration.

